

Monitoring of A Cacao Fruit Infected with Frosty Pod Rot (*Moniliophthora Roreri*) (CIF. & PAR.) Evans *et al* attached to the Tree

Gabriel Cubillos*

Agronomist Engineer Carrera 86 #34-56, Medellín, Colombia

***Corresponding Author:** Gabriel Cubillos, Agronomist Engineer Carrera 86 #34-56, Medellín, Colombia.

Received: November 30, 2017; **Published:** June 02, 2018

Abstract

The cacao pods affected by Frosty Pod Rot (*Moniliophthora roreri*) hanging on the trees are the main source of infection because they trigger the epidemic episodes. As a consequence, it was considered important to know the critical state of the diseased pods during which they turn into authentic infection sources. To achieve this, it was necessary to observe the changes suffered by one infected pod during seven weeks, from its initial stage characterized of brown stains. The results indicate that the pod reached sporulation in one week and kept its full potential for three. It started losing sporulation power by the seven week, when it showed thin spore lumps only in some places. In order to break the epidemic episodes the cultural control must be especially focused on the removal of pods with brown stains and early sporulation stages.

Keywords: Frosty Pod Rot; Cacao; Pods; Cultural Control; Infection

Volume 2 Issue 6 June 2018

© All Copy Rights are Reserved by Gabriel Cubillos.

Introduction

Within the cultural control platform it's fundamental to know the infection power of the pods affected by *Moniliophthora roreri* (Ciferri & Parodi) Evans, *et al.* still attached to cacao trees. To do so is necessary to trace the evolution and determine the critic period that they constitute infection sources within the crops.

Materials and Methods

At the Granja Agrícola La Nacional, in the Támesis municipality (Antioquia department), Colombia, SA., located 1040 meters above the sea level, with an average temperature of 23°C, 2300 millimeters of annual rain and 76% of relative humidity, on July 15th 2017, a pod in brown-stain stage (Figure 1), still attached to the tree (clone ICS-39) was chosen in order to monitor the evolution of symptoms and sporulation process. The pod was periodically checked during seven weeks.

Citation: Gabriel Cubillos. "Monitoring of A Cacao Fruit Infected with Frosty Pod Rot (*Moniliophthora Roreri*) (CIF. & PAR.) Evans *et al* attached to the Tree". *Innovative Techniques in Agriculture* 2.6 (2018): 509-513.



Figure 1: Pod with *M. roreri* in brown stain stage (clone ICS-39).
Granja La Nacional, Támesis municipality, Colombia SA.

Results

Seven days after the beginning of the monitoring process (July 22nd) the pod was found sporulated (Figure 2). The white pseudostrome covered all the stain and the formation of cream-colored spore lumps was observed in different places. It was from this moment on, that the diseased pod became a powerful source of infection



Figure 2: Pod of the clone ICS-39, seven days after that was observed in brown stain state. Granja La Nacional, Támesis municipality, Colombia SA.

On July 26th, eleven days later, the pod was found completely covered of cream-colored spores (ripes) ready to be spread especially by the wind Figure 3.

On July 29th, two weeks later, (one week after the beginning of the sporulation process) the pod evidenced maximum sporulation which was distributed on all its surface showing lumps of ripe cream-colored spores already detaching from the mycelium. Figure 4.



Figure 3: Sporulated pod eleven days after its original brown stain stage. Granja La Nacional, Támesis municipality, Colombia SA.



Figure 4: Sporulation of the pod one week after the beginning of the sporulation process. Granja La Nacional, Támesis municipality, Colombia SA.

On August 5th, two weeks after the beginning the sporulation process, the pod is still intact with spreading cream-colored spore lumps; similarly to the previous week Figure 5. This means after beginning the sporulation process and during two weeks the pod apparently keeps its infective power.

On August 12th, three weeks later, the pod keeps its sporulation but not with the exuberance of the previous week. Figure 6. A significant portion of the mycelium is showing a greyish color.

On September 9th, the pod has been sporulating for seven weeks. Yet it can be observed how sporulation power has been lost after being reduced to thin lumps in disperse areas. The mycelium follows taking the greyish color, Figure 7.



Figure 5: Sporulation stage of the pod two weeks after the beginning the sporulation process. Granja La Nacional, Támara municipality, Colombia SA.



Figure 6: Pod in stain stage after three weeks of sporulation. Granja La Nacional Támara municipality, Colombia SA.

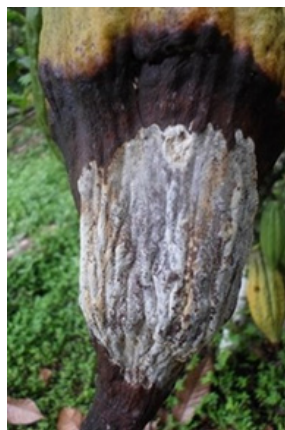


Figure 7: State of the pod seven weeks in sporulation stage. Granja La Nacional, Támara municipality, Colombia SA.

Discussion and Conclusions

The pods with *Moniliophthora roreri* in brown (chocolate-colored) stain stage normally begin to sporulate seven days later. From the first week the sporulation is profuse and they become powerful sources of secondary infection, generating heavy epidemic episodes that could take up to two additional weeks. Later, they lose great part of the sporulation power and behaving like primary inoculum (perpetuating the disease within the crop) as it was observed after seven weeks of monitoring. Cultural control of Frosty Pod Rot essentially involves detachment of the affected pods (chocolate-stained stage) from the cacao trees and also those which sporulated recently. These pods can be freely left on the ground as the easiest measure to interrupt the epidemic cycle of the disease, according to the statements of González (1983) and Cubillos (2017) who say that under these conditions they cannot generate new infections.

Acknowledgments

The author thanks to all people that helped to register the photographic scenes. Especially to the staff of the Granja Agrícola La Nacional of Compañía Nacional de Chocolates (Nutresa Group). Of course, to Professor David Hernández who reviewed the English version.

References

1. Cubillos G. "Cocoa Pod and Pod Borer: enemies that damage cocoa crops in Colombia". *Lambert Academic Publishing* (2017): 43.
2. Gonzáles LC. "Proyecto de investigación. Epifitología y combate de la Moniliasis del cacao. Informe anual 1981". *El Cacaotero Colombiano* 23 (1983): 40-53.

Submit your next manuscript to Scientia Ricerca Open Access and benefit from:

- Prompt and fair double blinded peer review from experts
- Fast and efficient online submission
- Timely updates about your manuscript status
- Sharing Option: Social Networking Enabled
- Open access: articles available free online
- Global attainment for your research

Submit your manuscript at:

<https://scientiaricerca.com/submit-manuscript.php>